



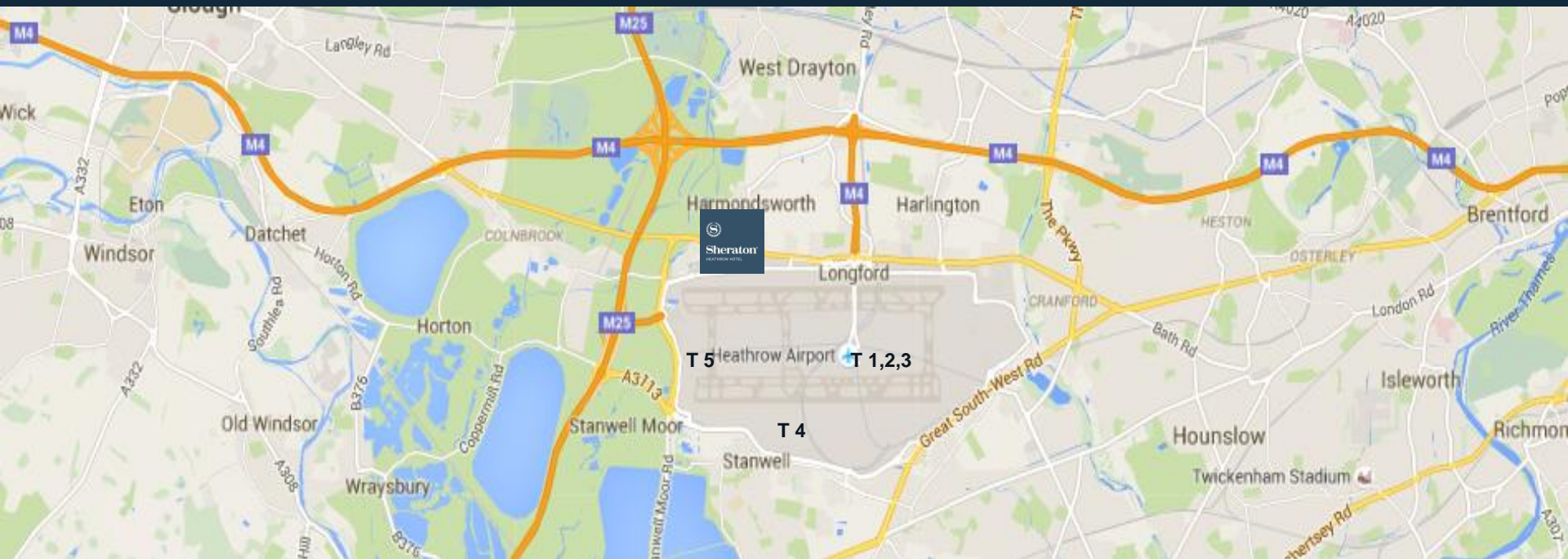
# Sheraton Heathrow Hotel

REDEFINING COMFORT AT LONDON HEATHROW  
AIRPORT





# Location



- 8 minutes from Terminal 5
- 13 minutes from Terminals 1,2,3
- Fast and easy access to M25 and M4
- Heathrow Express Train and Piccadilly Line direct to Central London

# Sheraton Heathrow Hotel



- **Total Number of Rooms & Suites**

- 426 Rooms including 98 Club Rooms and 4 Junior Suites

- **Conference Centre**

- 18 meeting rooms
- 1350 square meters of meeting space
- Largest Meeting/Ballroom 218 square metres

- **Hotel Features**

- Fully renovated public areas
- British Restaurant – The Orchard
- Relaxing Bar – The Discovery Bar
- Club Lounge & 98 Club Rooms

# Redefining Comfort at London Heathrow Airport

- Over 100 new bedrooms available from May 2016
- Only newly refurbished bedrooms available from end of August 2016
- All 426 bedrooms fully refurbished available from beginning of 2017



## Guest Room Transformation:

- 40" SAMSUNG Smart TV's
- All rooms feature Sheraton Experience Signature Sleeper™ Bed
- Wi Fi and Wired High Speed Internet Access available, upgraded speed to 1GB
- In-built International Plugs
- Complimentary In room Tea and Coffee facilities
- Digital Entertainment Systems
- Wide range of amenities including In room safe, iron and ironing boards
- New Air Conditioning Units in all bedrooms
- Newly fitted Bathrooms



# Club Lounge – The Orange Lounge



- Complimentary Continental Breakfast served every morning
- Complimentary Snacks and Refreshments
- Complimentary Dinner canapés and alcoholic beverages between 18:00 and 20:00 every day



## The Orchard Restaurant



Treat yourself to our traditional british cuisine or enjoy our pizza baked in our very own pizza oven.

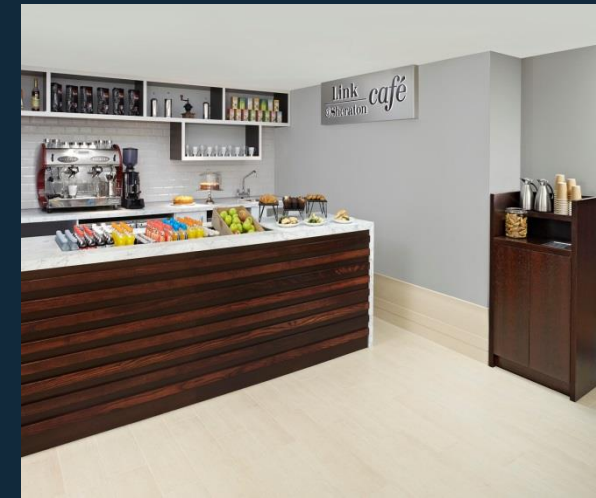
Seats up to 150 people and can be fully-privatized for groups.

## The Discovery Bar



Relax with an after-work drink at our Discovery Bar and enjoy one of our mouth-watering snacks.

## The Link Café



For coffee on the go or a delicious frothy cappuccino try out the Link Café, serving typical Italian Masetti Coffee.



Delegates will enjoy our delicious healthy DDR offerings with different dishes being served every day





# Sheraton Fitness



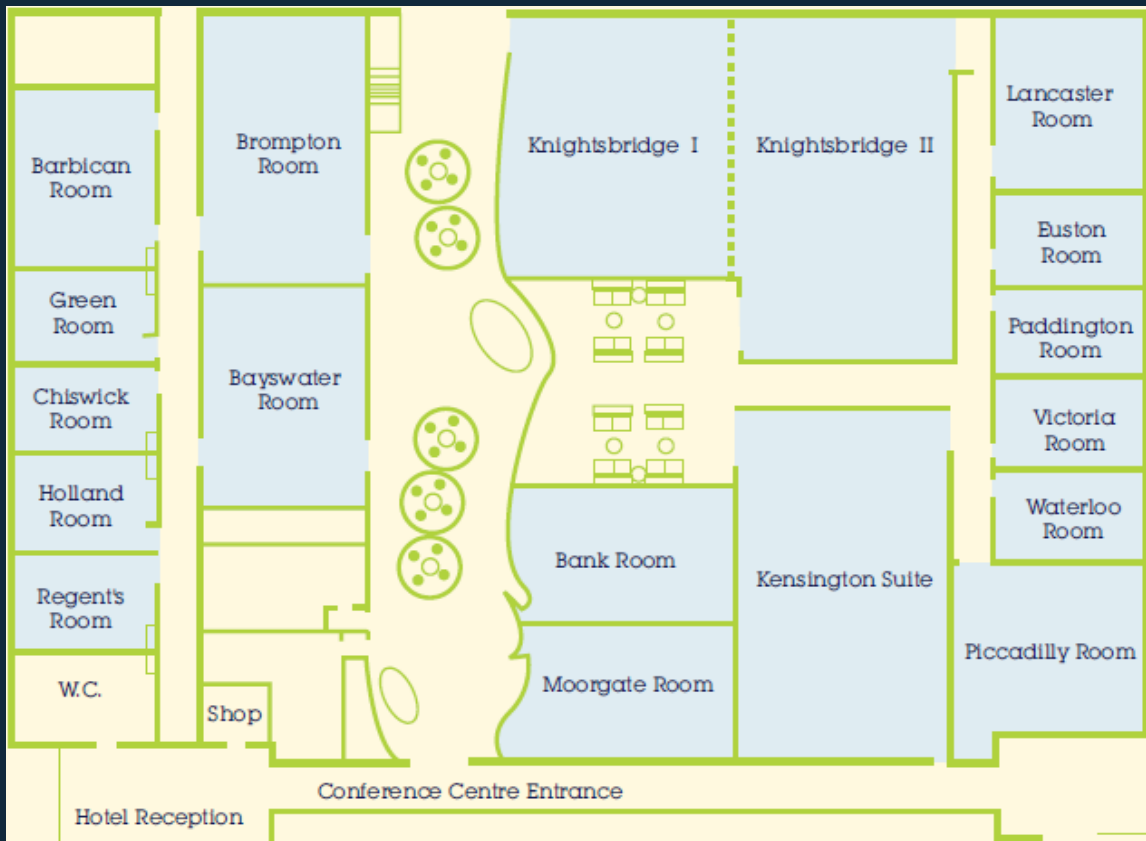
- Newly fitted Technogym equipment
- Private access with keycard for guests only
- Open 24/7





# The Conference Centre

Upgraded from April 2016



Name	Area (sq.m)	Theatre	Classroom	Cabaret	Board room	U-Shape
Atrium	228					
Knightsbridge	218	200	130	104	76	65
Kensington	105	120	60	64	50	45
Grenadier	91.5	50	40	24	20	20
Brompton	75	70	40	32	30	32
Bayswater	60	50	30	24	25	27
Piccadilly	22	35	16	24	20	16
Lancaster	36	40	22	24	20	16
Moorgate	47				20	
Bank	47				20	
8 Executive Boardrooms	23				10	

- Fully self-contained flexible Conference Centre on ground floor with direct access to garden
- New Samsung SMART signage throughout the conference centre
- New Samsung “Magic” 75” touch screen TVs in main boardrooms
- Meeting concierge present at all hours as your personal point of contact



# The Conference Centre





# The Knightsbridge Suite







# Team Building at Sheraton Heathrow



## Pizza Making

Create your perfect pizza!

From hand-made dough to a traditional Italian sauce and ideas for creative toppings, our pizza chef will inspire your group to try out their very own pizza making style, before baking it in The Orchard Restaurant's stone fired pizza oven.

For that competitive element, our Chef will judge the best pizza before your group dine on their culinary efforts alongside a delicious Italian buffet of pasta and salad to accompany their hand made pizza.

T&Cs: Does not include drinks. Available at £15.00 per person if taken as a supplement on our daily delegate rate package. Includes VAT. Minimum group size is 10 guests.

From  
£22 PER  
PERSON

£15.00 per person if taken as a supplement on our DDR package. Includes VAT



## Cocktail Masterclass

Shaken...not stirred!

Learn the art of making a great cocktail from our in house mixologist who will help you shake up your favourite tippie!

Whether you prefer an old favourite, such as a Cosmopolitan, or are would like to create your very own signature serve, our team will be on hand to help you discover some exciting new recipes to try at home for your next party!

T&Cs: Does not include food. Available at £20.00 per person if taken as a supplement on our daily delegate rate package. Includes VAT. Minimum group size is 10 guests

From  
£25 PER  
PERSON

Available at £20.00 per person if taken as a supplement on our daily delegate rate package. Includes VAT



## Paired Perfectly

Savour the unexpected with our beer & food pairing masterclass!

Delight your senses and be surprised to discover some perfectly paired ales and small plates. From a selection of local brews to some real Scottish ales, our expert team will show your group some beer tasting techniques.

You'll then learn how to pair these with some delicious small plates, all with an unexpected twist!

T&Cs: Available at £20.00 per person if taken as a supplement on our daily delegate rate package. Includes VAT. Minimum group size is 10 guests.

From  
£25 PER  
PERSON

Available at £20.00 per person if taken as a supplement on our daily delegate rate package. Includes VAT.

# Introducing SPG Pro



*Fun L., Meetings & Exhibits Director with the Cardiovascular Research Foundation, evaluating outdoor space at the W New York, New York, USA*

# The benefits of being a pro

Great Points.

Go elite.

You've earned it.

- Redeem your Starpoints on airmiles on over 150 carriers
- Free nights at any Starwood Hotels and Resorts
- Gift Cards on Amazon, Banana Republic, iTunes, Brookstone, Conde Nast, GAP, and many more...
- Discounts on AVIS and Sixt rent a car
- Get access to VIP moments at London's O2 Arena, New York's Madison Square Garden, Las Vegas and many more locations worldwide..

# Meet. Earn. Repeat.

Enrollment is complimentary.



**[spg.com/pro](https://spg.com/pro)**





Please contact the events team and sales manger for any requests or further assistance

**Your Dedicated Sales Manager:**

Samuel Rossetto

T: +44 (0) 208 283 1515

M:+44(0)78 2522 7535

E: [samuel.rossetto@sheraton.com](mailto:samuel.rossetto@sheraton.com)

**EVENTS TEAM:**

Ms. Ilze Rozentale, Ms. Sanita Gozhda and/or Mr. Sharu Saravanan

T: +44 (0)20 8283 1587

E: [Events.Sheratonheathrow@sheraton.com](mailto:Events.Sheratonheathrow@sheraton.com)